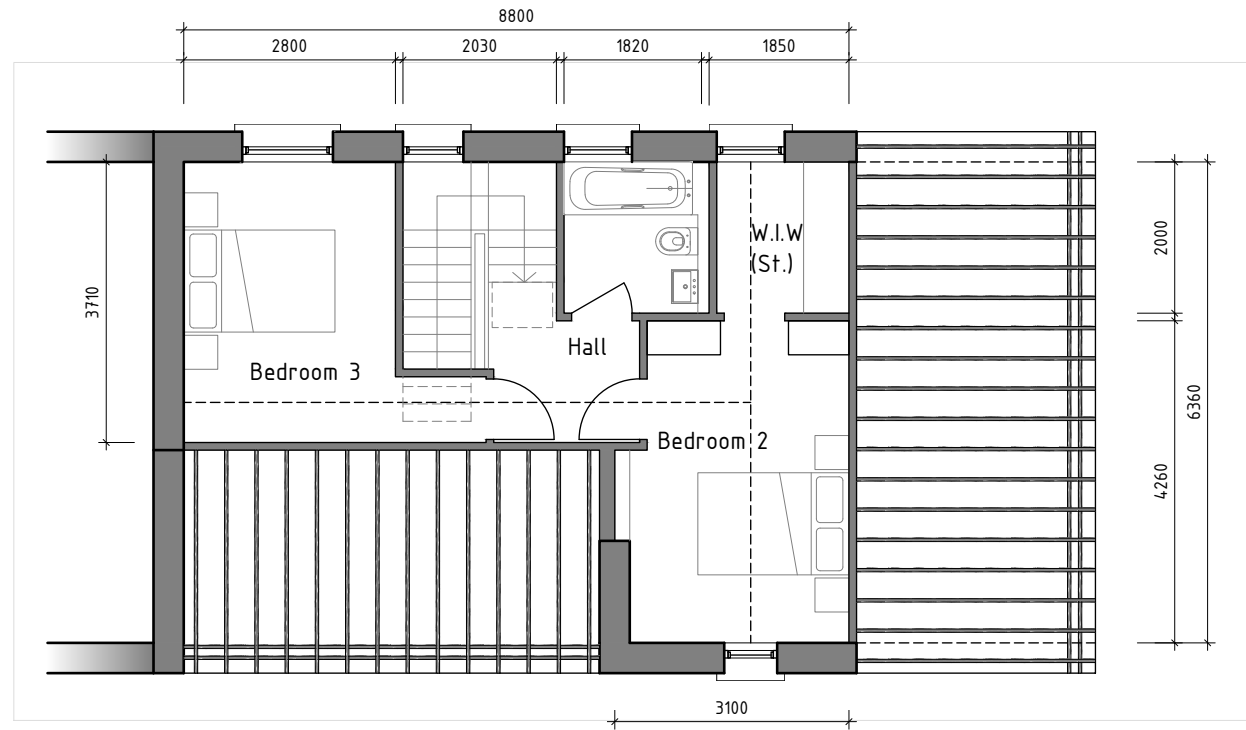
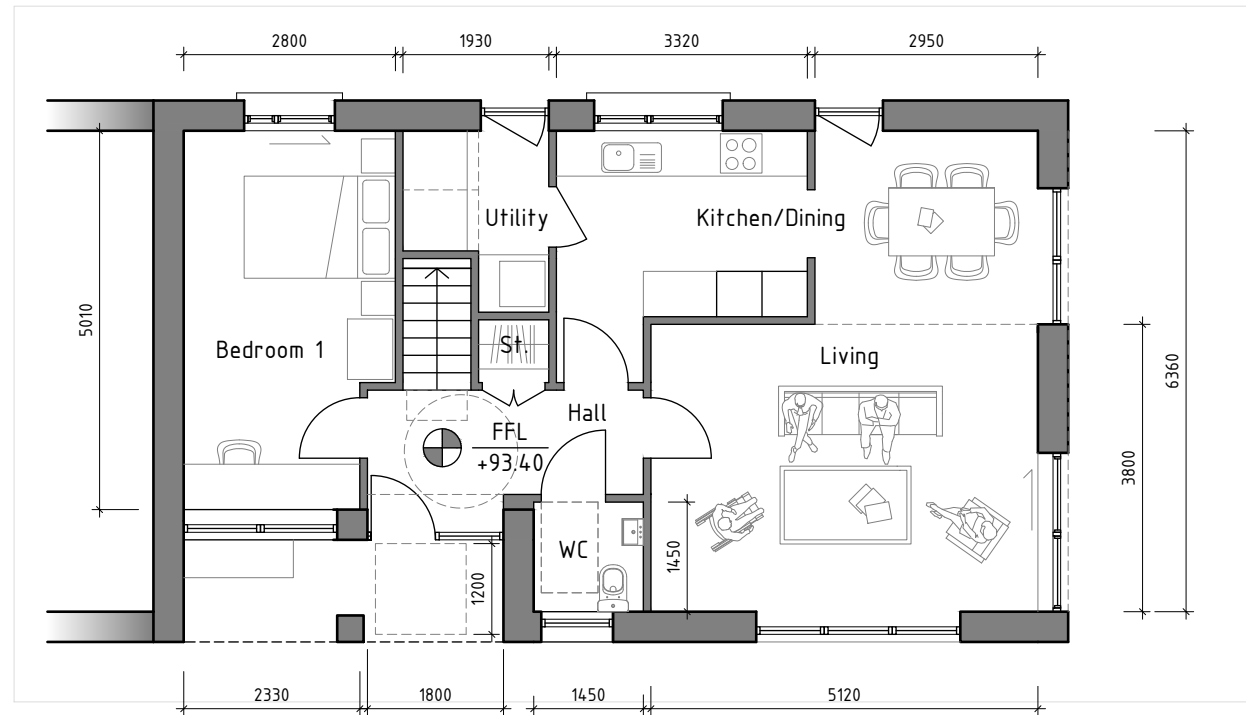


| 3-Bed/6-Person House (Two storey) |                                 |                 |                     |               |               |          |
|-----------------------------------|---------------------------------|-----------------|---------------------|---------------|---------------|----------|
| Accommodation                     | Target Floor Areas (DoEHLG/KCC) | Provision (sqm) | Min. width (m)      | Provision (m) | Standards met | Comments |
| Gross Floor Area                  | 100 (QHSC) 100 (KCC)            | 101             |                     |               | Y             |          |
| Agg. Living/ Dining Area          | 37sqm                           | 37              | 3.8                 | 3.8           | Y             |          |
| Agg. Bedroom Area                 | 36sqm                           | 36              | 2.8                 | 2.8           | Y             |          |
| Storage                           | 6 (QHSC) 9 (KCC)                | 9               |                     |               | Y             |          |
| Private Amenity                   | 40 (SRDCS) 60 (KCC)             | 80              | 8 (SRDCS) -11 (KCC) | 7             | Y             |          |
| Accessible Toilet (TGD M)         | Varies                          | Diagram 36      | 1.45                | 1.45          | Y             |          |



**2 3-BED FIRST FLOOR PLAN PROPOSED**  
1:100@A3



**1 3-BED FLOOR PLAN PROPOSED**  
1:100@A3

